

VCC-7 SERIES

HD Pan Tilt Camera

VCC-7 SERIES Series Compact PTZ Camera is designed to provide high definition and high resolution picture quality. It uses low voltage CMOS sensor. The camera's wide pan angle allows smooth and quiet pan/tilt movements and is suitable for churches, schools, large conference and music hall environments.



VISCA

ONVIF

Key Features

High Definition Picture Quality : 1080P、720P

High Zoom Ratio Lens : 20X、30X

High Speed Smooth Pan Tilt System : Horizontal 350°Rotate , Vertical 120°

Control Protocol : VISCA、PELCO P/D、ONVIF

Image Quality: Using the latest DSP and ClearVid CMOS sensor, camera surpasses traditional camera sensors to achieve higher picture quality with higher resolution and lower sensitivity. The camera's "color shading" function allows greater accuracy in adjustments of special object colors.

High Precision Mechanical Design

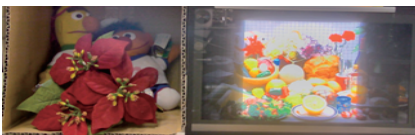
Main body is made of Magnesium Alloy. This will reduce interference and guarantee highest picture quality.

Pan Tilt mechanism uses High Precision Stepper Motor that guarantees smooth pan and tilt movements.

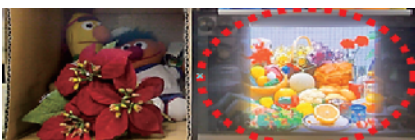
Magnesium Alloy Body

Image Enhancement Functions

Normal WDR



Super WDR



Normal HD Effect



Improved Picture Effects

1080P(16 : 9)
High Resolution Picture Quality



Image Stabilizer: Under slight moving conditions of the camera, this function will stabilize picture for quality recording of video.

Mechanical Specification

Pan / Tilt Angle	Horizontal : ±350 degrees continuous pan (Highest Speed: 200 degrees / sec) Vertical: +90 degrees to -30 degrees (Max Speed: 120 degrees/sec)
Preset Position	128 (Speed : 260 degrees / sec)
Home Position	Support
Environmental	IP65
Operating Temperature	-40 °C to +60 °C
Operating Humidity	≤80% Suitable for Use
Power Input	DC12V
Power Consumption	12W
Dimension	201*165*211mm
Weight	1.9KG

Camera Specification

	20X	30X
Image Sensor	1/2.8" CMOS 2.38MP	1/2.8" CMOS 2.38MP
Lens	4.9~94mm	4.3~129mm
Horizontal Angle of View	59.5°(W)~3.3°(T)	63.7°(W)~2.3°(T)
Aperature	F1.6(W)~F3.5(T)	F1.6(W)~F4.7(T)
Min. Illumination	0.35 lux Color (F1.6 AGC on 1/30 s)	0.35 lux Color (F1.6 AGC on 1/30 s)
Shutter Speed	1/1~1/10000s	1/1~1/10000s
Resolution	1080P60, 1080P50, 1080P30, 1080P25, 1080i60, 1080i50, 720P60, 720P50, 720P30, 720P25	
Focus	Auto, Push	
White Balance	Auto, Manual	
Exposure	Auto, Manual, Shutter, Iris	
Day / Night	Support	
BLC	Support	
WDR	Support	
Defog	Support	
Noise Reduction	2D/3D	
S/N Ratio	≥50db	

IP Specification

Video Compression	MJPEG, H.264 High Profile
Frame Rate	1080P (1920*1080) MAX:60 FPS, 720P(1280*720) MAX:30 FPS, D1(720*576) MAX:25 FPS
Protocols	IPv4, IGMP, ICMP, ARP, TCP, UDP, DHCP, PPPoE, RTP, RTSP, QoS, DNS, DDNS, NTP, FTP, UPnP, HTTP, SNMP, SIP, GB/T28181, ONVIF IP Auto Adaptations, Effective monitoring even under data loss environment
Multi-stream	3 data stream function will satisfy various bandwidth, frame rates and storage requirements in real time
Audio Compression	AAC-LC Broadband Audio Encoding
Special Function	UNP Technique, resolve Private Network NAT throughput, support movement testing, audio testing, various intelligent functions.
OSD	Customized OSD, Support Side Hook and Artistic Font
Storage	Support 32GB Local Storage (Optional)

HD-SDI Signal and Control

Signal Output	HD-SDI(3G), HDMI, DVI, YPbPr, CVBS, IP
Control Port	RS-232, RS-422, RS-485
Control Protocol	VISCA, PELCO P/D

Note: Signal Fluctuations 800mv +/-10% (external cable extension requirements 75-5, 128 twisted pair shielding , coaxial cable)

Flexible Combinations

Signal Output

DVI / HDMI
HD-SDI
IP
YPbPr
CVBS

Installation Methods

Wall Mount
Pole Mount
Hoisting Installation
Wall Corner Mount

Ordering Information

BLC-VCC-7HD20S-F BLC-VCC-7HD30S-F (SDI+DVI / HDMI+YPbPrC+VBS Signal)
BLC-VCC-7HD20S-SMN BLC-VCC-7HD30S-SMN (SDI+HDMI+IP Signal)

Installation Diagram

