

## VCC-2 SERIES

### HD Pan Tilt Camera

**VCC-2 SERIES** Series Compact PTZ Camera is designed to provide high definition and high resolution picture quality. It uses low voltage CMOS sensor. The camera's wide pan angle allows smooth pan and tilt movements and is suitable for churches, schools, large conference and music hall environments.

**VCC-2 SERIES** Series Compact PTZ Camera is the smallest among other video conference cameras. Light weight body allows for ease of connection and operation. The tilt mechanism makes low noise to ensure minimal interference.



VISCA

ONVIF



### Key Features

**High Definition Picture Quality** : 1080P、720P

**High Zoom Ratio Lens** : 10X、3X

**High Speed Smooth Pan Tilt System** : Horizontal 350°Rotate , Vertical 120°

**Control Protocol** : VISCA、PELCO P/D、ONVIF

**Image Quality:** Using the latest DSP and ClearVid CMOS sensor, camera surpasses traditional camera sensors to achieve higher picture quality with higher resolution and lower sensitivity. The camera's "color shading" function allows greater accuracy in adjustments of special object colors.

### High Precision Mechanical Design



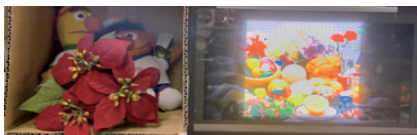
Magnesium Alloy Body

Main body is made of Magnesium Alloy. This will reduce interference and guarantee highest picture quality.

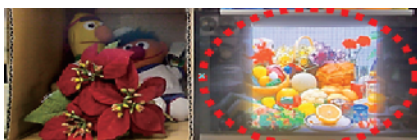
Pan Tilt mechanism uses High Precision Stepper Motor that guarantees smooth pan and tilt movements.

### Image Enhancement Functions

Normal WDR



Super WDR



Normal HD Effect



Improved Picture Effects



1080P(16 : 9)

High Resolution Picture Quality



**Image Stabilizer:** Under slight moving conditions of the camera, this function will stabilize picture for quality recording of video.

## Mechanical Specification

Pan / Tilt Angle	Horizontal : ±350 degrees continuous pan (Highest Speed: 200 degrees / sec) Vertical: +90 degrees to -30 degrees (Max Speed: 120 degrees/sec)
Preset Position	128 (Speed : 260 degrees / sec)
Home Position	Support
Environmental	IP65
Operating Temperature	-40 °C to +60 °C
Operating Humidity	≤80% Suitable for Use
Power Input	DC12V
Power Consumption	12W
Dimension	145*154mm
Weight	0.9KG

## Camera Specification

	10X B	10X S	3X
Image Sensor	1/2.86" CMOS 2.2MP	1/2.8" CMOS 2.14MP	1/2.8" CMOS 3.27MP
Lens	6.53~62.18mm	3.8~38mm	3~9mm
Horizontal Angle of View	50°(W)~4.9°(T)	67°(W)~7.6°(T)	90° (1080P), 60°(720P)
Aperature	F1.8(W)~F2.5(T)	F1.8(W)~F3.4(T)	F1.2(W)~F2.1(T)
Min. Illumination	0.2 lux(F1.8,IRC Close) 0.005 lux(F1.8,IRC Open)	0.19 lux(F1.8,IRC Close) 0.05 lux(F1.8,IRC Open)	0.25 lux(F1.2,ICR Close) 0.03 lux(F1.2,ICR Open)
Shutter Speed	1/1~1/10000s	1/1~1/10000s	1/1~1/10000s
Resolution	1080P60, 1080P50, 1080P30, 1080P25, 1080i60, 1080i50, 720P60, 720P50, 720P30, 720P25		1080P30, 1080P25, 1080i60, 1080i50 720P60, 720P50, 720P30, 720P25
Focus	Auto, Push		
White Balance	Auto, Manual		
Exposure	Auto, Manual, Shutter, Iris		
Day / Night	Support		
BLC	Support		
WDR	Support		
Defog	Support		
Noise Reduction	2D/3D		
S/N Ratio	≥50db		

## IP Specification

Video Compression	MJPEG, H.264 High Profile
Frame Rate	1080P (1920*1080) MAX:60 FPS, 720P(1280*720) MAX:30 FPS, D1(720*576) MAX:25 FPS
Protocols	IPv4, IGMP, ICMP, ARP, TCP, UDP, DHCP, PPPoE, RTP, RTSP, QoS, DNS, DDNS, NTP, FTP, UPnP, HTTP, SNMP, SIP, GB/T28181, ONVIF IP Auto Adaptations, Effective monitoring even under data loss environment
Multi-stream	3 data stream function will satisfy various bandwidth, frame rates and storage requirements in real time
Audio Compression	AAC-LC Broadband Audio Encoding
Special Function	UNP Technique, resolve Private Network NAT throughput, support movement testing, audio testing, various intelligent functions.
OSD	Customized OSD, Support Side Hook and Artistic Font
Storage	Support 32GB Local Storage (Optional)

## HD-SDI Signal and Control

Signal Output	HD-SDI(3G), HDMI, DVI, YPbPr, CVBS, IP
Control Port	RS-232, RS-422, RS-485
Control Protocol	VISCA, PELCO P/D

Note: Signal Fluctuations 800mv +/-10% (external cable extension requirements 75-5, 128 twisted pair shielding, coaxial cable)

## Flexible Combinations

Signal Output

- DVI / HDMI
- HD-SDI
- IP
- YPbPr
- CVBS

Installation Methods

- Wall Mount
- Pole Mount
- Hoisting Installation
- Wall Corner Mount

## Ordering Information

BLC-VCC-2HD03S-F    BLC-VCC-2HD10B-F    ( SDI+DVI / HDMI+CVBS Signal )

BLC-VCC-2HD03S-SN    BLC-VCC-2HD10B-SN    ( SDI+IP Signal )    BLC-VCC-2HD03S-MN    BLC-VCC-2HD10B-MN    ( HDMI+IP Signal )

## Installation Diagram

